

Japan

Sr. No.	Date	Sector	News Headline	Source
1.	21.01.26	Trade	“International Finance” multiple negative attacks: The dollar weakens and the yen rises	ChinaTimes
2.	21.01.26	Trade	Sell-off trade in the United States resumes, Japan plans to cut consumption tax to increase fiscal burden	ChinaTimes
3.	21.01.26	Trade	TCL to take controlling stake in Sony’s TV, audio business	ChinaDaily
4.	23.01.26	Trade	Hon Hai and Mitsubishi FUSO establish joint venture bus company	ChinaTimes

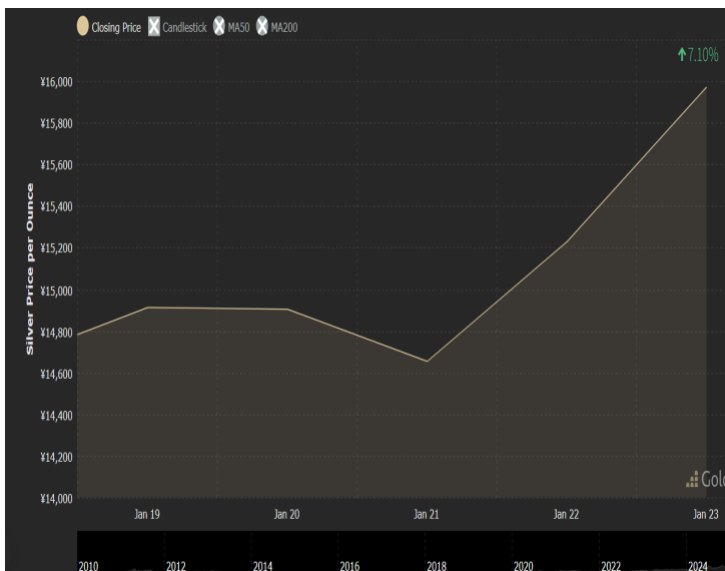
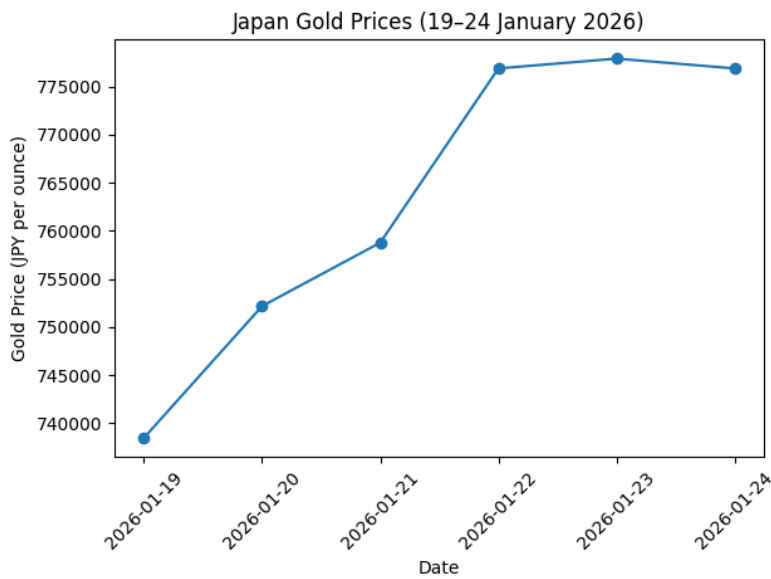
Insights - These developments point to a rebalancing in global finance and industry: dollar weakness and US market sell-offs signal financial volatility, while Japan’s fiscal easing reflects growth pressures. Simultaneously, Asian corporates are deepening cross-border industrial consolidation, indicating a shift in technological and manufacturing gravity toward East Asia.

5.	21.01.26	Foreign Politics	The lost opportunity of Nepalese in Japan	Annapurnapost
6.	23.01.26	Foreign Politics	Bangladesh-Japan EPA approved	The Daily Inqlab
7.	23.01.26	Foreign Politics	Additional Japanese-made rails provided to Ukraine with JICA support to maintain railway network amid Russian invasion	Sankei news

Insights - Taken together, these developments show Japan leveraging economic statecraft and development diplomacy: deepening formal trade integration with Bangladesh, selectively managing labour migration outcomes (as seen with Nepal), and using infrastructure support to Ukraine to reinforce its rules-based, partner-centric foreign policy.

8.	23.01.26	Domestic	Japan's lower house formally dissolved	CGTN
9.	21.01.26	Domestic	Life sentence for man who killed Japan's ex-PM Shinzo Abe	risingnepaldaily

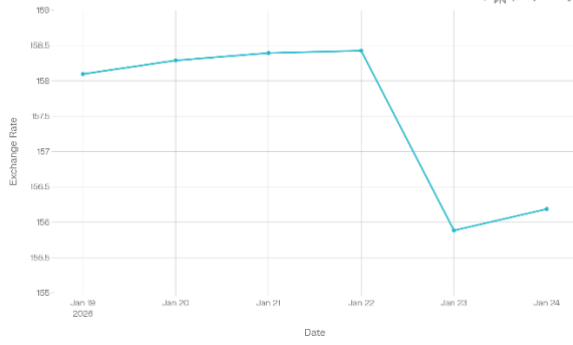
Insight - These events underscore Japan's institutional resilience: electoral politics proceeds through formal dissolution of the lower house, while the judiciary delivers a definitive verdict in a case that deeply shook national security norms.



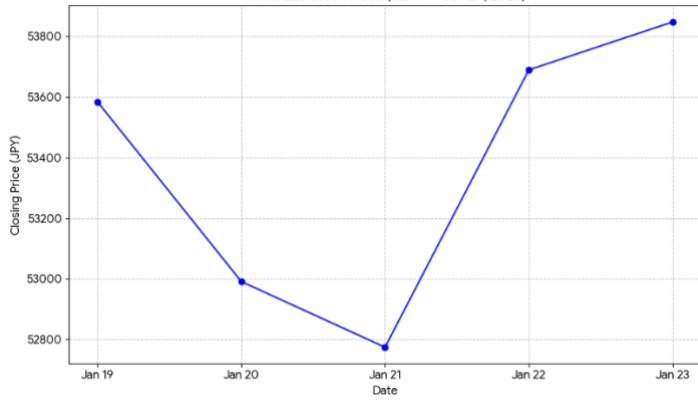
Japanese Yen Weakens Against Dollar (Jan 19-24, 2026)

Yen declined 1.4% before rebounding on Jan 23-24

Powered by perplexity



Nikkei 225 Stock Index (Jan 19 - Jan 24, 2026)



Bank of Japan Short-term Policy Interest Rate (Jan 19 - Jan 24, 2026)

